

ADACEL Technologies Ltd.

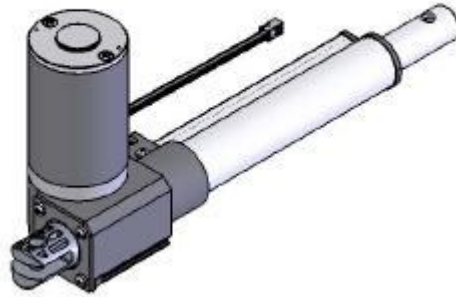
JM20

Motor Specs;

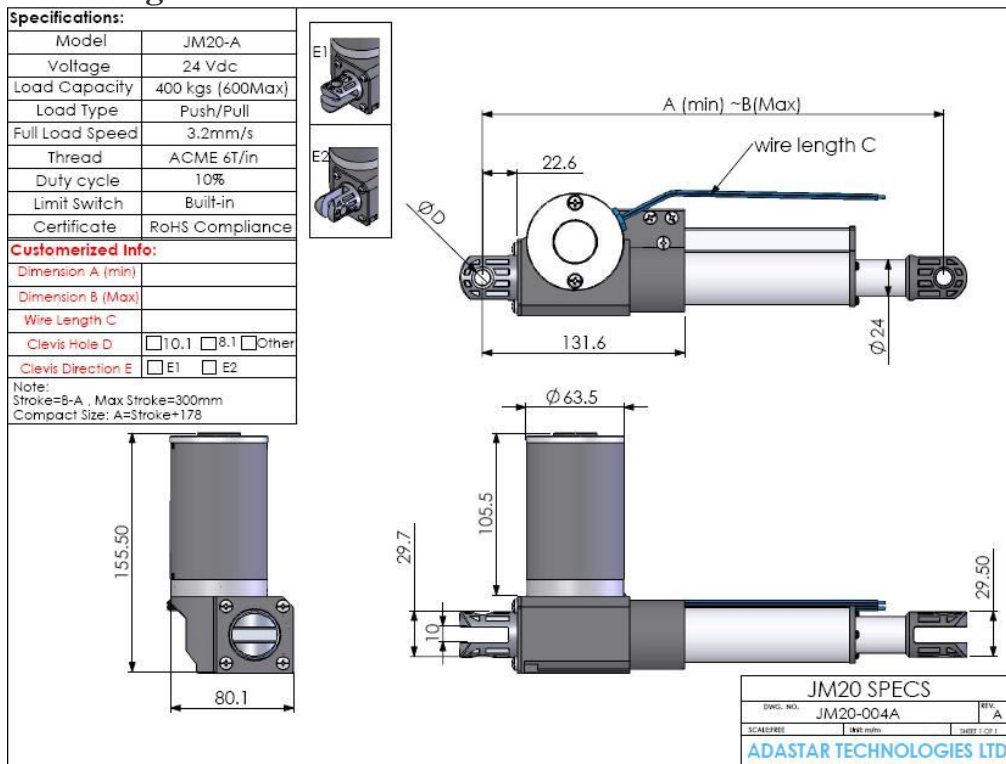
- 12~180 VDC PMDC
- Adjustable stroke
- class 2C acme screw
- Dust cover
- POM gears for quiet operation
- 200~800 pounds thrust

Options:

- Adjustable Cam
- Feedback
- Various strokes
- Various mounting configuration
- DC control with memory



Drawing:



Shanghai Manufacturing Center

LianDa Industrial Zone, FeiHu North Rd, LuDu Town, Tai Cang City, JiangSu Province,
P.R.C. Postal Code.:215412

Tel: 86-512-5337-1388 * Fax: 86-512-5337-1386 * Email; Jenny@adaceltech.com

USA Phone number to China (916)550-6242 (if no answer, leave a message)